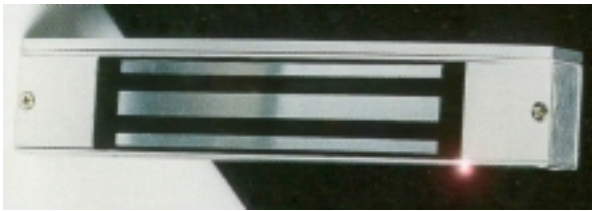


Single Magnets, not monitored

Code:	<u>FE411</u>
Mount:	Vertical
Holding Force:	1330N
Input Voltage:	12 VDC
Current draw:	400 mA
Finish:	Stainless steel
Dimensions:	162 x 32 x 23 mm (w x h x d)



Code:	<u>FE321</u>
Mount:	Standard / surface
Holding Force:	3000N
Input Voltage:	12/24 VDC
Current draw:	500/250 mA
Finish:	Anodized Aluminium
Dimensions:	268 x 48 x 25 mm (w x h x d)
Brackets:	FE32Z, FE32L, FE32A



Code:	<u>FE319</u>
Mount:	Mortice
Holding Force:	3000N
Input Voltage:	12/24 VDC
Current draw:	500/250 mA
Finish:	Anodized Aluminium
Dimensions:	229 x 39 x 24 mm (w x h x d)



Code:	<u>FE370</u>
Mount:	Standard / surface
Holding Force:	6000N
Input Voltage:	12/24 VDC
Current draw:	500/250 mA
Finish:	Anodized Aluminium
Dimensions:	268 x 73 x 40 mm (w x h x d)
Brackets:	FE37Z, FE37L, FE37A

Single Magnets, monitored



Code: **FE310**
Mount: Standard / surface
Holding Force: 1800N
Input Voltage: 12/24 VDC
Current draw: 380/190 mA
Finish: Anodized Aluminium
Dimensions: 166 x 39 x 21 mm (w x h x d)
Monitoring: Reed
Brackets: FE31Z

Code: **FE312**
Mount: Mortice
Holding Force: 1800N
Input Voltage: 12/24 VDC
Current draw: 380/190 mA
Finish: Anodized Aluminium
Dimensions: 166 x 39 x 21 mm (w x h x d)
Monitoring: Reed



Code: **FE322**
Mount: Mortice
Holding Force: 3000N
Input Voltage: 12/24 VDC
Current draw: 500/250 mA
Finish: Anodized Aluminium
Dimensions: 229 x 39 x 24 mm (w x h x d)
Monitoring: Reed



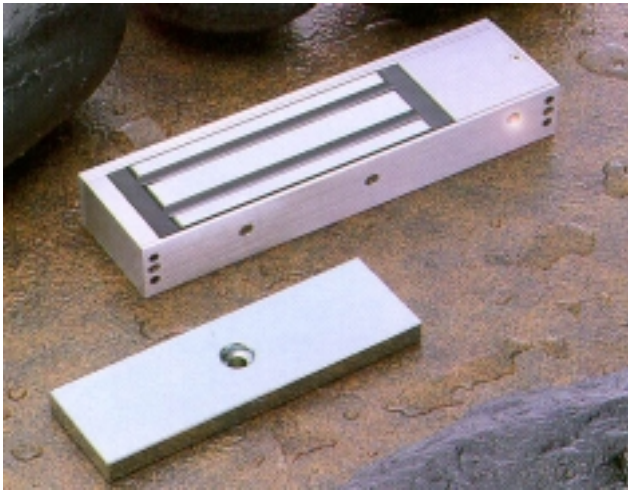
Code: **FE323**
Mount: Standard / surface
Holding Force: 3000N
Input Voltage: 12/24 VDC
Current draw: 500/250 mA
Finish: Anodized Aluminium
Dimensions: 268 x 48 x 25 mm (w x h x d)
Monitoring: Relay + LED
Brackets: FE32Z, FE32L, FE32A

Access Control Solutions Magnetic Locks

Aritech reserves the right to change specifications without notice

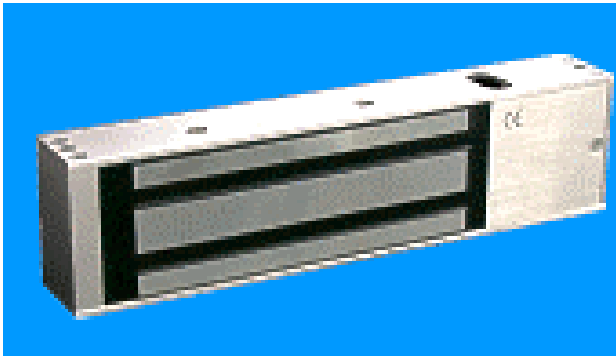
ARITECH

3



Code: **FE371**
Mount: Standard / surface
Holding Force: 6000N
Input Voltage: 12/24 VDC
Current draw: 500/250 mA
Finish: Anodized Aluminium
Dimensions: 268 x 73 x 40 mm (w x h x d)
Monitoring: Relay + LED
Brackets: FE37Z, FE37L, FE37A

Code: **FE372**
Mount: Standard / surface
Holding Force: 6000N
Input Voltage: 12/24 VDC
Current draw: 500/250 mA
Finish: Anodized Aluminium
Dimensions: 268 x 73 x 40 mm (w x h x d)
Monitoring: High secure: 2 relays + LED
Brackets: FE37Z, FE37L, FE37A



Code: **FE772**
Mount: Standard / surface
Holding Force: 5790N
Input Voltage: 12/24 VDC
Current draw: 500/250 mA
Finish: Anodized Aluminium
Dimensions: 268 x 75 x 40 mm (w x h x d)
Monitoring: Dual: Reed + Hall effect and relay
Brackets: FE37Z, FE37L, FE37A

Dual Magnets, not monitored

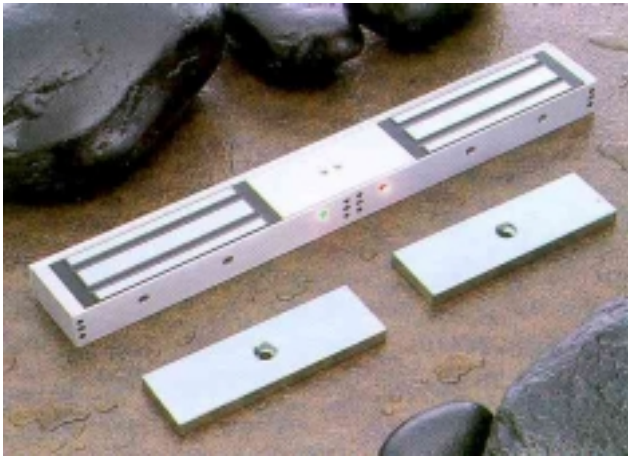
Code:	<u>FE425</u>
Mount:	Standard / surface
Holding Force:	2 x 2890N
Input Voltage:	12/24 VDC
Current draw:	2 x 500/250 mA
Finish:	Anodized Aluminium
Dimensions:	500 x 42 x 24 mm (w x h x d)
Brackets:	FE480, FE481, FE482, FE483 (FE482 is Z/L kit for inswinging doors)



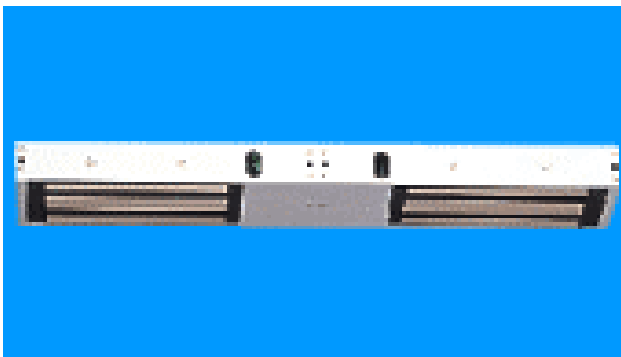
Code:	<u>FE375</u>
Mount:	Standard / surface
Holding Force:	2 x 6000N
Input Voltage:	12/24 VDC
Current draw:	2 x 500/250 mA
Finish:	Anodized Aluminium
Dimensions:	536 x 73 x 40 mm (w x h x d)
Brackets:	FE37Z, FE37L, FE37A

Dual Magnets, monitored

Code:	<u>FE426</u>
Mount:	Standard / surface
Holding Force:	2 x 2890N
Input Voltage:	12/24 VDC
Current draw:	2 x 500/250 mA
Finish:	Anodized Aluminium
Dimensions:	500 x 42 x 24 mm (w x h x d)
Monitoring:	Hall effect and relay
Brackets:	FE480, FE481, FE482, FE483 (FE482 is Z/L kit for inswinging doors)



Code:	<u>FE376</u>
Mount:	Standard / surface
Holding Force:	2 x 6000N
Input Voltage:	12/24 VDC
Current draw:	2 x 500/250 mA
Finish:	Anodized Aluminium
Dimensions:	536 x 73 x 40 mm (w x h x d)
Monitoring:	Relay + LED
Brackets:	FE37Z, FE37L, FE37A



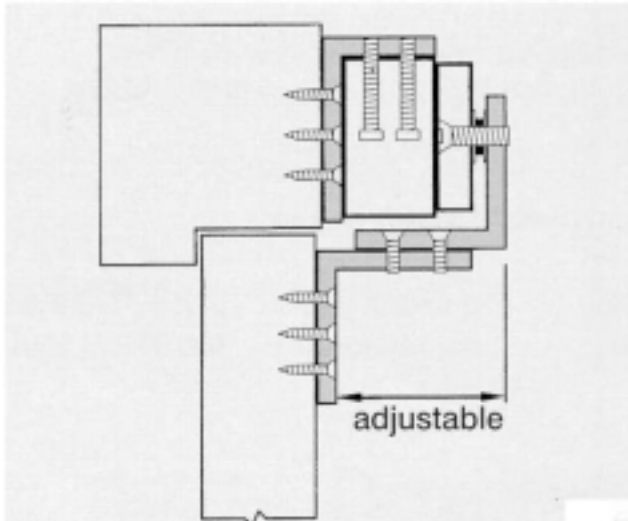
Code:	<u>FE777</u>
Mount:	Standard / surface
Holding Force:	2 x 5790N
Input Voltage:	12/24 VDC
Current draw:	2 x 500/250 mA
Finish:	Anodized Aluminium
Dimensions:	500 x 75 x 40 mm (w x h x d)
Monitoring:	Dual: Reed + Hall effect and relay
Brackets:	FE37Z, FE37L, FE37A

Shearlock

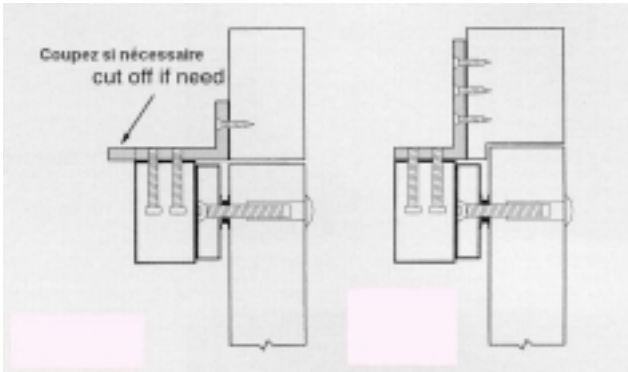


Code:	<u>FE380</u>
Mount:	Mortice
Holding Force:	8000N
Input Voltage:	12 VDC
Current draw:	250 mA
Finish:	Anodized Aluminium
Dimensions:	165 x 31 x 21 mm (w x h x d)
Monitoring:	Relay + LED

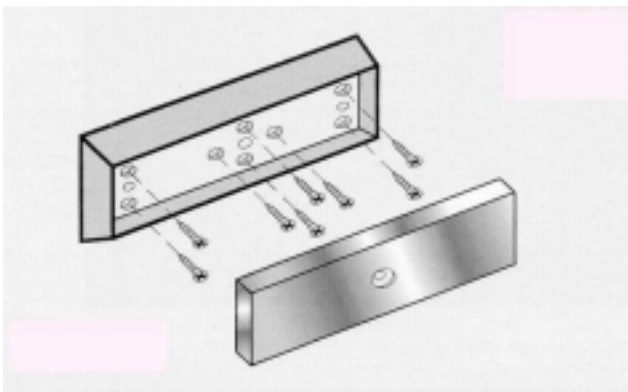
Brackets



- Code:** **FE31Z**
Magnets: Z bracket for 1800 N series;
FE310, FE312
- Code:** **FE32Z**
Magnets: FE321, FE323
- Code:** **FE37Z**
Magnets: Z bracket for 6000N series:
FE370, FE371, FE372, FE375, FE376
And FE772, FE777
- Code:** **FE481**
Magnets: FE425, FE426



- Code:** **FE32L**
Magnets: FE321, FE323
- Code:** **FE37L**
Magnets: Armature holder for 6000N series:
FE370, FE371, FE372, FE375, FE376
And FE772, FE777
- Code:** **FE480**
Magnets: FE425, FE426



- Code:** **FE32A**
Magnets: FE321, FE323
- Code:** **FE37A**
Magnets: Armature holder for 3000N series:
FE370, FE371, FE372, FE375, FE376
And FE772, FE777
- Code:** **FE483**
Magnets: FE425, FE426